

PTA 202D



GENERAL

PTA202D Digital Pressure Gauge is the instrument which precisely measures differential, static, compound(±), vacuum, gauge pressures of air, or non-corrosive gas(±0.5%).
Features : 4 Digit LED display, current(4~20mA) output, 2SPDT switch output, communications(RS232 or RS485), AUTOZERO

APPLICATIONS

- Heating, Ventilating and Air Conditioning (HVAC)
- Energy Management System
- Variable Air Volume and Fan Control (VAV)
- Environmental Pollution Control
- Oven Pressurization and Furnace Draft Controls

SPECIFICATIONS

GENERAL

- Maximun Pressure(최대압력): Rated Range x 2
- Media Compatibility(사용유체): Air, non-corrosive gas
- Pressure Range(사용압력): 0~50Pascal to 0.2MPascal
0~±50Pascal to ±0.1MPascal

ELECTRICAL

- Power supply(전원공급): 24VDC or 85~265VAC
- Connection of Wier(결선): 2 screw terminal block
- Display(표시유형): 4Digit LED(FND 0.56")

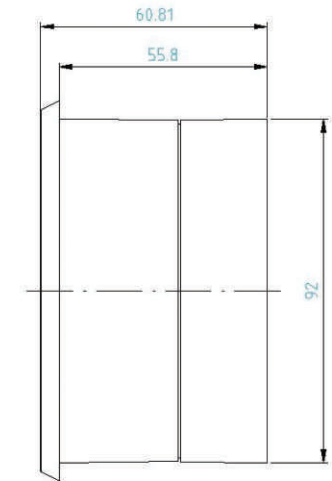
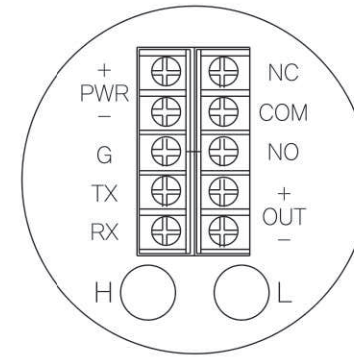
PERFORMANCE AT 23°C

- Accuracy(정밀도): ±0.5% FSO
(Includes Linearity, Hysteresis & Repeatability)
- ±0.25% Option
- Operation Temperature(사용온도): -40~85°C
- Compensated Temperature(보정온도): -20~85°C

MECHANICAL

- Pressure connections(압력연결): PT 1/8" female
- Materials(외부재질): PCABS mold resin
- Weigat(중량): 230g

Dimension >>>>



SPECIFICATIONS

TRANSMITTER(Optional)

- Connection of Wier(결선): 2 screw terminal block
- Output Signal(출력전류): 4~20mADC(limited at 30mADC)
- Loop Resistance(폐회로저항): 0~1100ohm

STANDARD ACCESSORIES

- Panel braket & Bolts

SWITCH(Optional)

- Relay Contact(릴레이출력): 1SPDT(NC-COM-NO)
- Contact Rating(접점용량): 1A 30VDC
- Connection of Wier(결선): 3Screw terminal block
- Level setting(설정유형): Local setting

COMMUNICATIONS

- RS485 MODBUS RTU

Ordering Information

PTA202D
(Model)

D

- A : Display Only
- B : Transmitter
- C : Switch
- D : Transmitter & Switch

A

- A : Absolute
- B : Both
- G : Gauge
- D : Differential
- V : Vaccum

100

Pressure Range (50Pa~0.5MPa)

M

- Pressure Unit
- M : mmH2O
- KPa : KPascal
- MPa : MPascal
- IN : Inch/H2O
- B : Bar

1

- 1 : DC24V
- 2 : AC85~265V
- 3 : DC12V

※ Pressure Range & Unit available on Request